

GRP underground vault for BASIC series cabinets

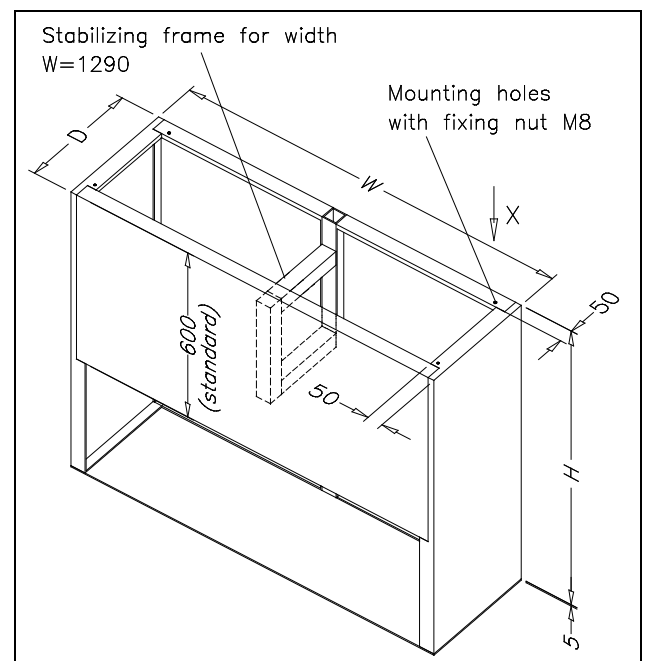
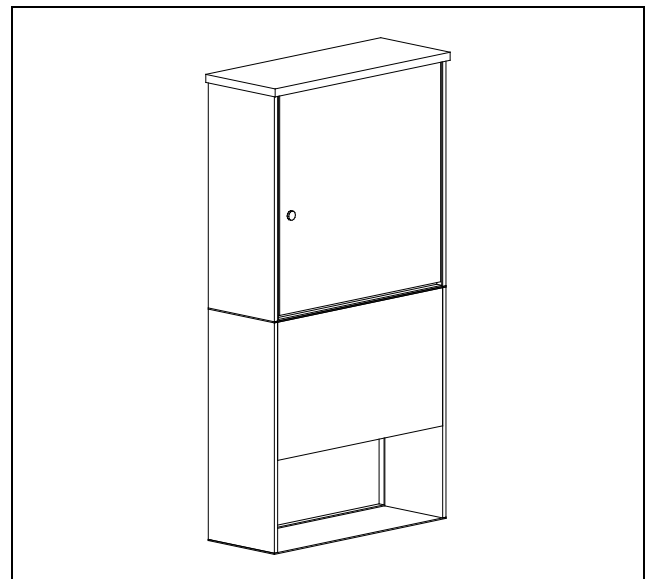
1 Application

Cables for cabinets with underground vaults usually enter the above ground section through a floor plate. The cables are sealed with bulkhead fittings. Special INTERTEC WDD grommets can be used for pipe sealing (see data sheet wall [KD162](#)). The interior of the vault is easily accessible through a flange plate. Cables can be pulled and the bulkhead fittings are within easy reach.

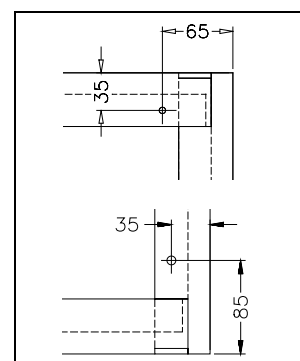
2 Advantages

- Moisture-proof separation of the cabinet from the ground
- Low weight resulting from the GRP material used for both the vault and cabinet
- Available as completely assembled unit or individual parts of cabinet and vault. Vault available assembled or as parts

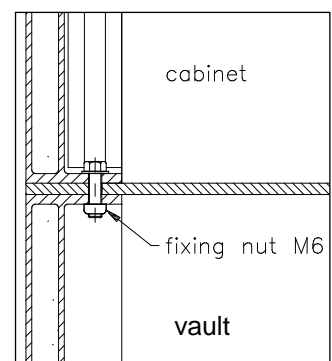
BASIC cabinet type	GRP vault H x W x D
....040.030	1000 x 440 x 300
....040.040	1000 x 440 x 400
....040.060	1000 x 440 x 600
....040.080	1000 x 440 x 800
....040.100	1000 x 440 x 1000
....060.030	1000 x 640 x 300
....060.040	1000 x 640 x 400
....060.060	1000 x 640 x 600
....060.080	1000 x 640 x 800
....060.100	1000 x 640 x 1000
....080.030	1000 x 840 x 300
....080.040	1000 x 840 x 400
....080.060	1000 x 840 x 600
....080.080	1000 x 840 x 800
....080.100	1000 x 840 x 1000
....100.030	1000 x 1040 x 300
....100.040	1000 x 1040 x 400
....100.060	1000 x 1040 x 600
....100.080	1000 x 1040 x 800
....100.100	1000 x 1040 x 1000
....129.030	1000 x 1290 x 300
....129.040	1000 x 1290 x 400
....129.060	1000 x 1290 x 600
....129.080	1000 x 1290 x 800
....129.100	1000 x 1290 x 1000



View on arrow X



Section cabinet/
vault attachment



Access opening for BASIC with ground vault

1 Application

Opening in the floor plate of cabinets to ease installation and assembly.

2 Description

Cut out in floor with entry plate

To seal the vault cavity from the interior of the cabinet the floor flange is complete with a sponge rubber gasket.

The entry plate is made from GRP and bolted to the flange making it removable

3 Advantages

- The floor entry plate of the protective cabinet is accessible from above and below
- Cable and pipe or tubing bulkhead connections to the fixed portion of the floor plate is also possible

4 Dimensions

BASIC cabinet type	cabinet/ vault		entry plate		flange depth
	A	B	C	D	E
....040.030	440	300	140	100	40
....040.040		400		150	74
....040.060		600		200	224
....040.080		800		250	374
....040.100		1000		250	574
....060.030	640	300	340	100	40
....060.040		400		150	74
....060.060		600		200	224
....060.080		800		250	374
....060.100		1000		250	574
....080.030	840	300	540	100	40
....080.040		400		150	74
....080.060		600		200	224
....080.080		800		250	374
....080.100		1000		250	574
....100.030	1040	300	740	100	40
....100.040		400		150	74
....100.060		600		200	224
....100.080		800		250	374
....100.100		1000		250	574
....129.030	1290	300	990	100	40
....129.040		400		150	74
....129.060		600		200	224
....129.080		800		250	374
....129.100		1000		250	574

section K-K

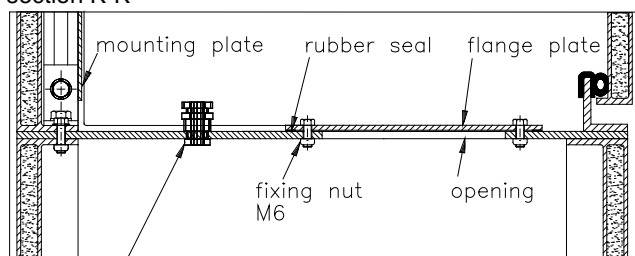
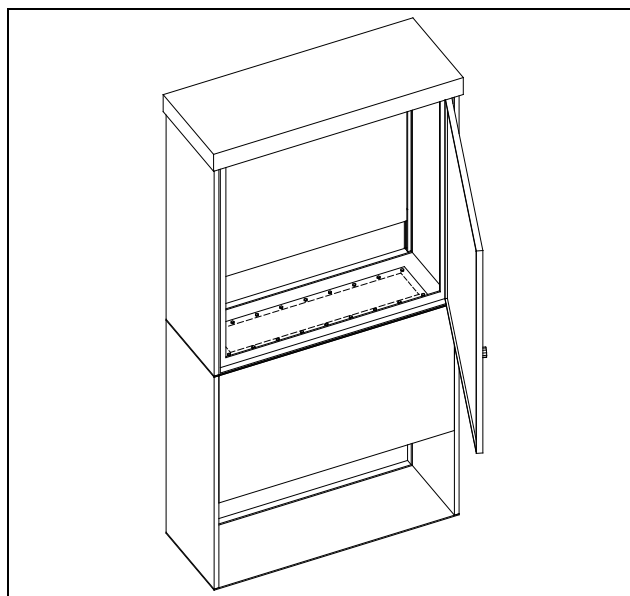
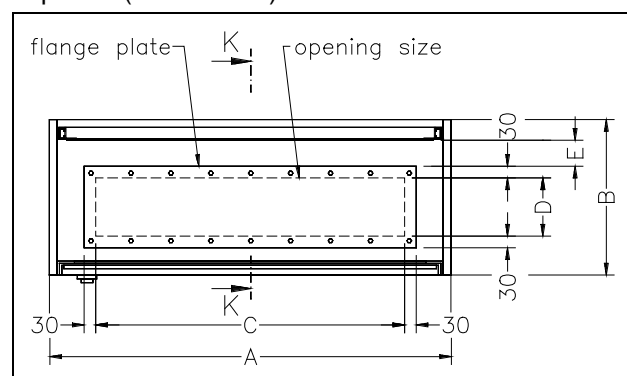


Illustration of arrangement: bulkhead-fitting (supplied by others)



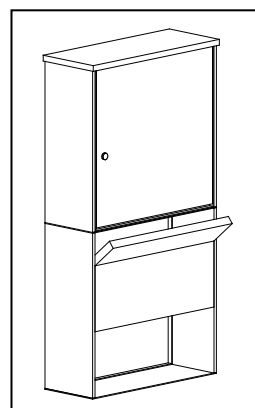
Top view (without roof)



5 Ordering designation

Floor version design "H"

6 Option: removable access panel



On request, an access panel below the door can be made removable to enable even better access for installation and assembly. The width of this removable footboard is the same as the door. The standard height is 200mm. To prevent unauthorised entry, the panel can only be opened when the cabinet door is open.

Order designator SZ008