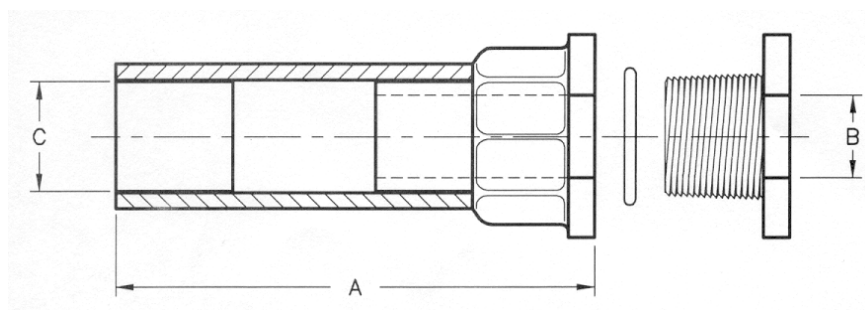


Shrink Sleeves

INTERTEC shrink sleeves provide an entry seal for use with single and multiple cables or tube bundles:

- Resistant to heat and corrosive environments, polyolefin heat shrinkable sleeve, ABS hub, and silicone O-ring.
- Maintains NEMA4X capability of enclosure
- Fits standard cutout dimensions (see chart below)
- Sizes from 0.12" to 4.50" (see chart below)
- Easily field installed, cut a hole in the box, install the hub, install a bundle, and heat sleeve to shrink



Intertec Part No.	"A" Nominal Body Length	"B" Max. ID	"C"		Drill Size
			Heat shrink Min. Expanded ID	Heat shrink Max. Recovered ID	
ISS1	3.45"	0.50"	0.50"	0.12"	1.00"
ISS2	3.45"	0.75"	0.75"	0.25"	1.00"
ISS3	3.75"	1.10"	1.10"	0.50"	1.375"
ISS4	4.75"	1.60"	1.60"	0.75"	2.00"
ISS4S	6.0"	2.10"	2.50"	0.75"	2.375"
ISS4SE	6.0"	2.10"	2.50"	0.75"	2.375"
1SS5	7.0"	2.90"	2.90"	1.43"	3.50"
ISS5X	10.0"	2.90"	4.50"	1.00"	3.50"
ISS6X	11.0"	3.60"	4.50"	1.00"	4.50"

Notes:

"B" Max. ID. dimension equals the maximum OD of the tube bundle entering the shrink sleeve.

"C" Max. recovered ID dimension equals the minimum OD of the tube bundle the shrink sleeve with seal around.

"ISS4SE" supplied with an extended threaded hub. This is used for Diabox installations and allows installation without the requirement to bulkhead the enclosure insulation.

"ISS5X" will seal around an oversize bundle (3 to 3.5" OD), however the outerjacket and some insulation must be removed to enter the body of the shrink sleeve as it penetrates the enclosure wall.