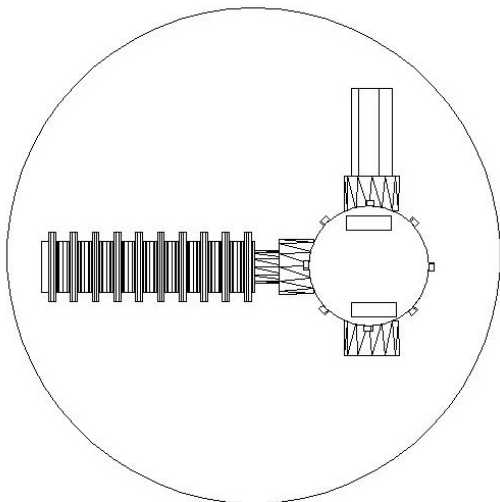


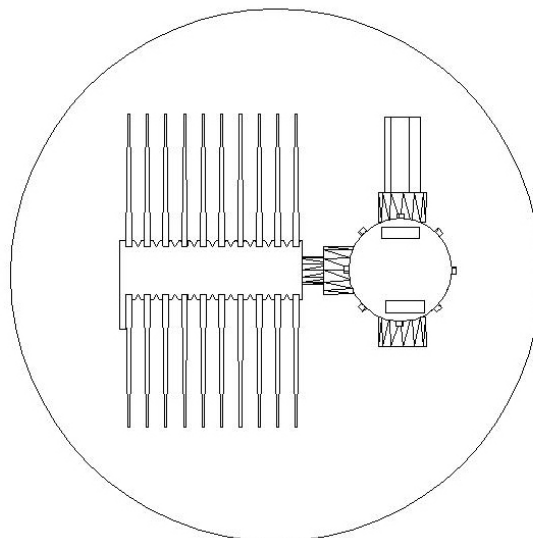


# CONVECTION HEATER Installation Instructions

## FRONT VIEW



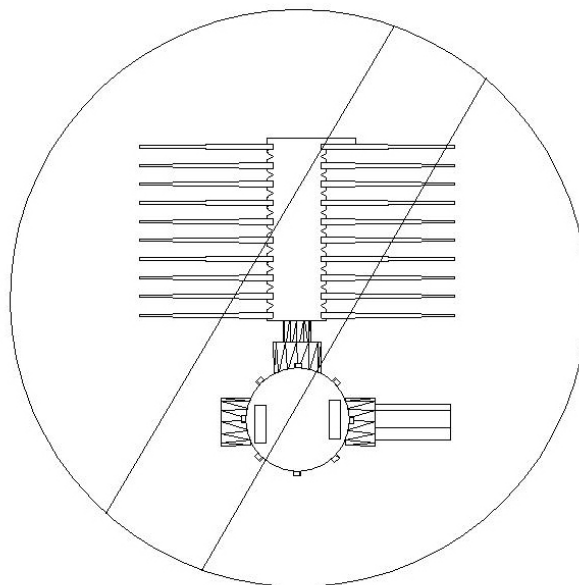
**BEST**



**OK, but 25% less heat**

## Installation Instructions

1. Assemble the heater, junction box and thermostat as required by installation arrangement needs. The thermostat must be installed horizontal or vertically up.
2. Fins of the heater **must always be vertical to the horizontal!**
3. Ensure a minimum of 4 to 6" directly above and 1 to 2" below the fins for air circulation.
4. Heater assembly must be located 2 to 3" from the bottom of the enclosure, preferably in a lower corner.
5. Remember, this is a **convection** heater and it relies on airflow through the fins for correct operation.



**NEVER, NEVER**  
**THIS WAY**

**IMPORTANT**, for temperatures over 85 F (30 C) contact the factory