



# Shade- DIASHADE SD 37, SD 67, SD 127, SD 187 Applications

## 1 Applications under...

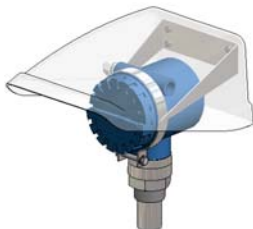
### 1.1 DIASHADE SD 37



Transmitter mounted underneath DIASHADE SD 37. DIASHADE SD 37 is mounted directly on a pipe stand.



Field indicator mounted underneath DIASHADE SD 37 and mounted on transmitter mounting bracket which is mounted to the pipe stand.



Rosemount transmitter 3051... or Endress and Hauser F12/T12 mounted underneath DIASHADE SD 37. DIASHADE SD 37 is mounted directly on the transmitter housing. A large variety of attachment brackets are available for the various types of transmitters designed by internationally re-nowned manufacturers.

### 1.2 DIASHADE SD 67

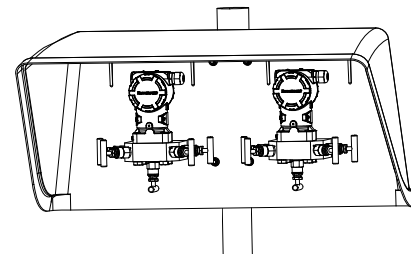


Capillary transmitter mounted underneath DIASHADE SD 67, attached to an internal pipe stand by means of mounting brackets.



Pressure transmitter mounted underneath DIASHADE SD 67 and attached to the external pipe stand by means of the MSW mounting system and rails.

### 1.3 DIASHADE SD 127

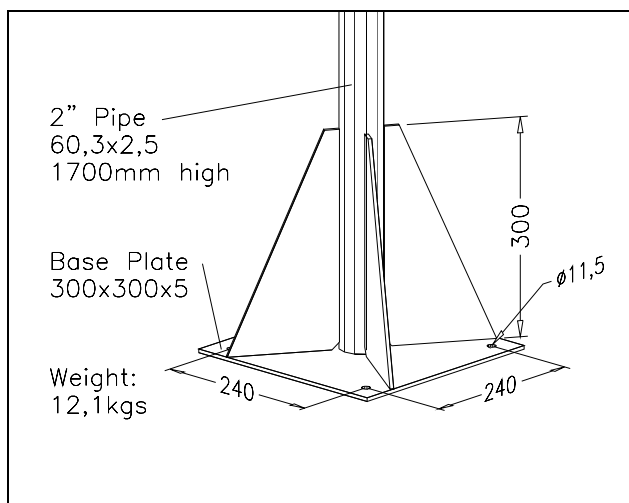


Two differential pressure transmitters with BM-manifolds, mounted on an optional mounting plate to an external pipe stand. Connection of the impulse and vent lines on the rear (horizontally).

# Shade - DIASHADE SD 37, SD 67, SD 127, SD 187

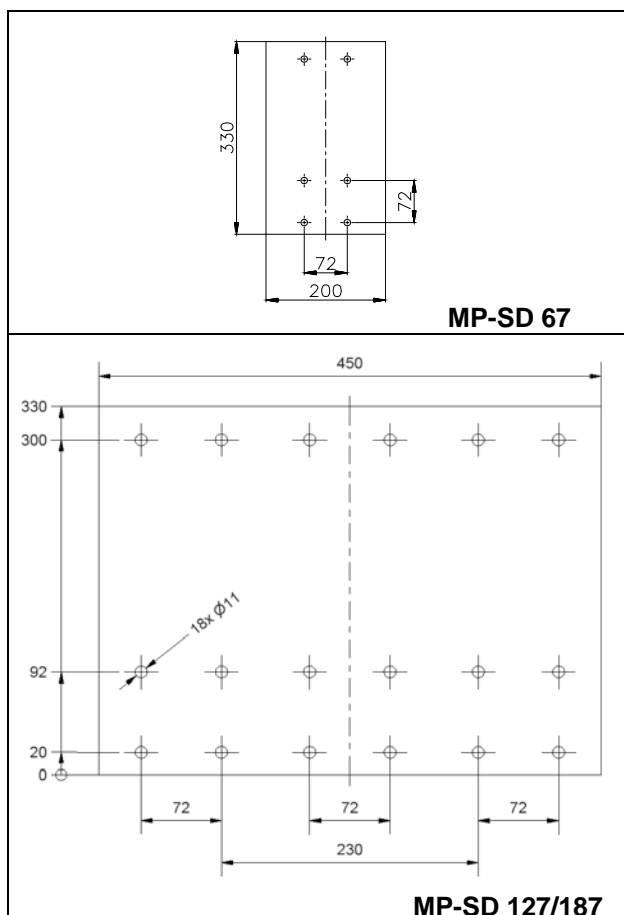
## Mounting Accessories

### 1 Pipe stand



**ST17-2, 1700mm high** for mounting of shades.

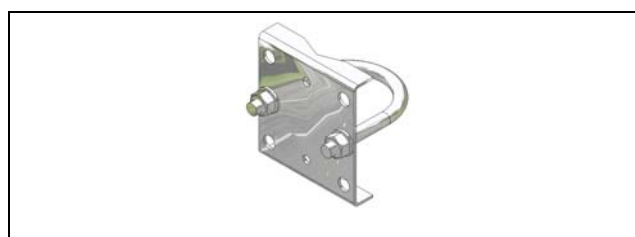
### 2 Mounting plates



### 3 Mountingsystem



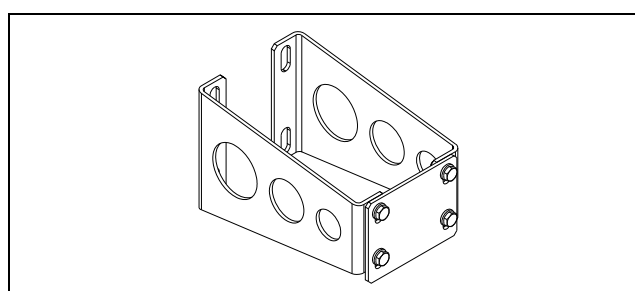
**MB-SD 22/37/40** with U- bolt M8 for mounting of DIASHADE 37 to a 2" pipe stand.



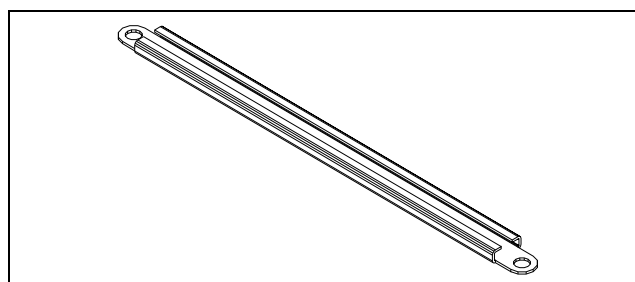
**MB-SD** with 2" U-bolt for mounting of DIASHADE to a 2" pipe stand.



**Bracket (BBV)** and 2 peaces 2"U- bolt (BB2") for mounting of manifolds to pipestand



**Mounting system MSW** for mounting of manifolds or instruments.



**C-rail MS 50 QS** for mounting of manifolds.

## Shade - DIASHADE SD 37, SD 67, SD 127, SD 187 Mounting Accessories

